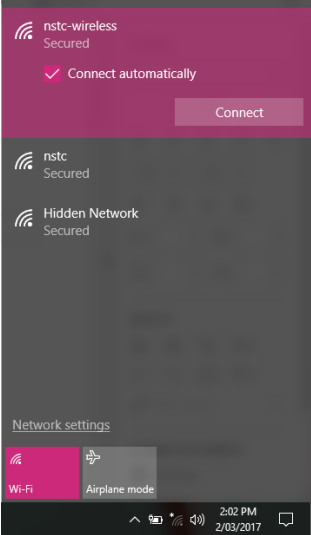


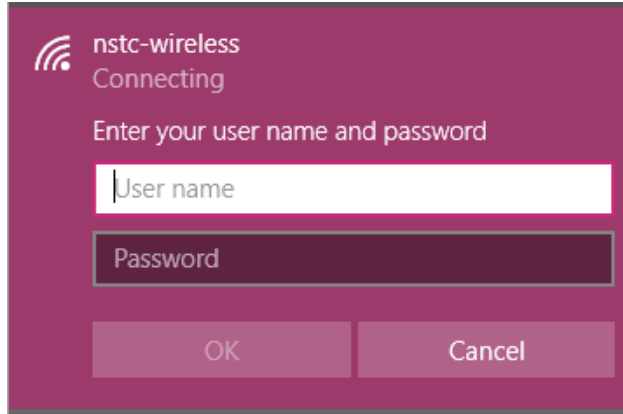
# Connecting to the Newman College wireless network on Windows 10 Device



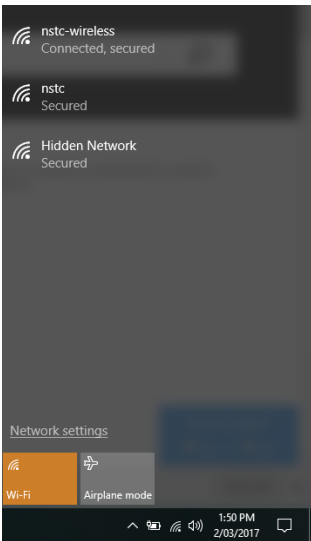
Click wireless Symbol in the taskbar to bring up a list of available networks



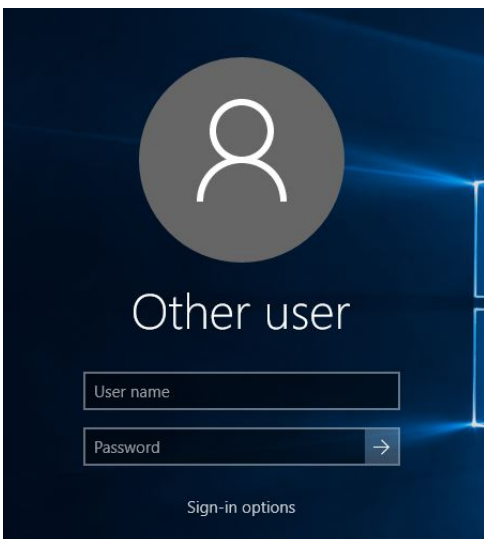
Click on nstc-wireless to highlight Newman wireless network and select “connect”.



Type in your Newman login credentials ie student.54



The connection should state connected or connected, secured.

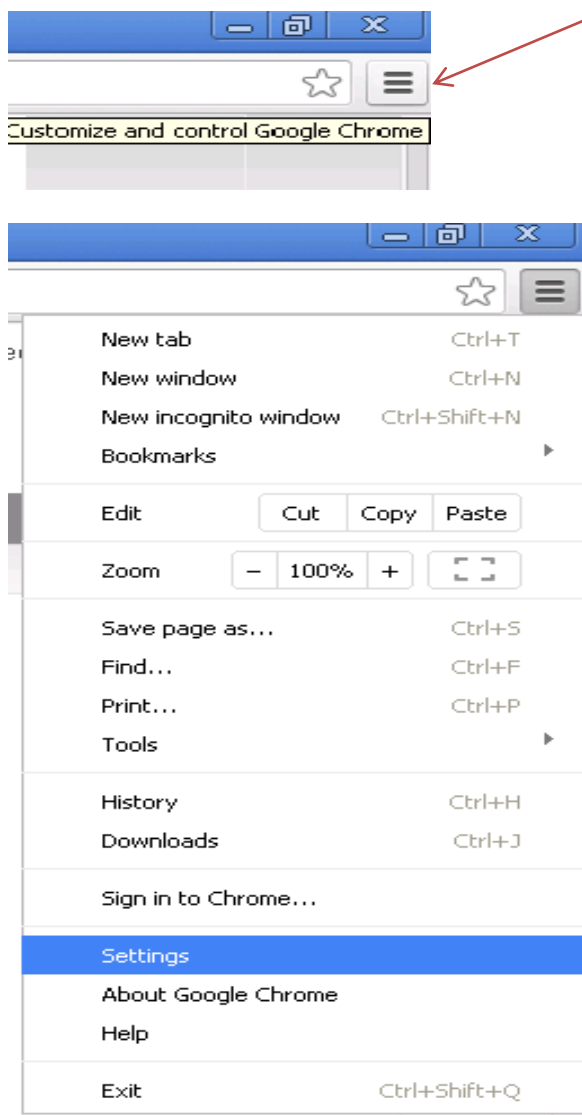


Now login to Windows using the same credentials.

## Setting the proxy server in your Google Chrome web browser

The college uses a proxy server for internet access at school. You will need to enter the proxy server information to your internet browser to allow access to the WAN. The school recommends you use Google Chrome as your internet browser. All screen shots below are to setup Google Chrome.

Open Google Chrome browser then click on the customise button & select settings



Scroll to the bottom of the screen and click on the **advanced settings**.

### Users

You are currently the only Google Chrome user.

[Add new user...](#)

[Delete this user](#)

[Import bookmarks and settings...](#)

### Default browser

[Make Google Chrome my default browser](#)

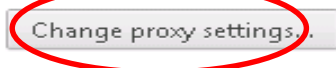
Google Chrome is not currently your default browser.

[Show advanced settings..](#)

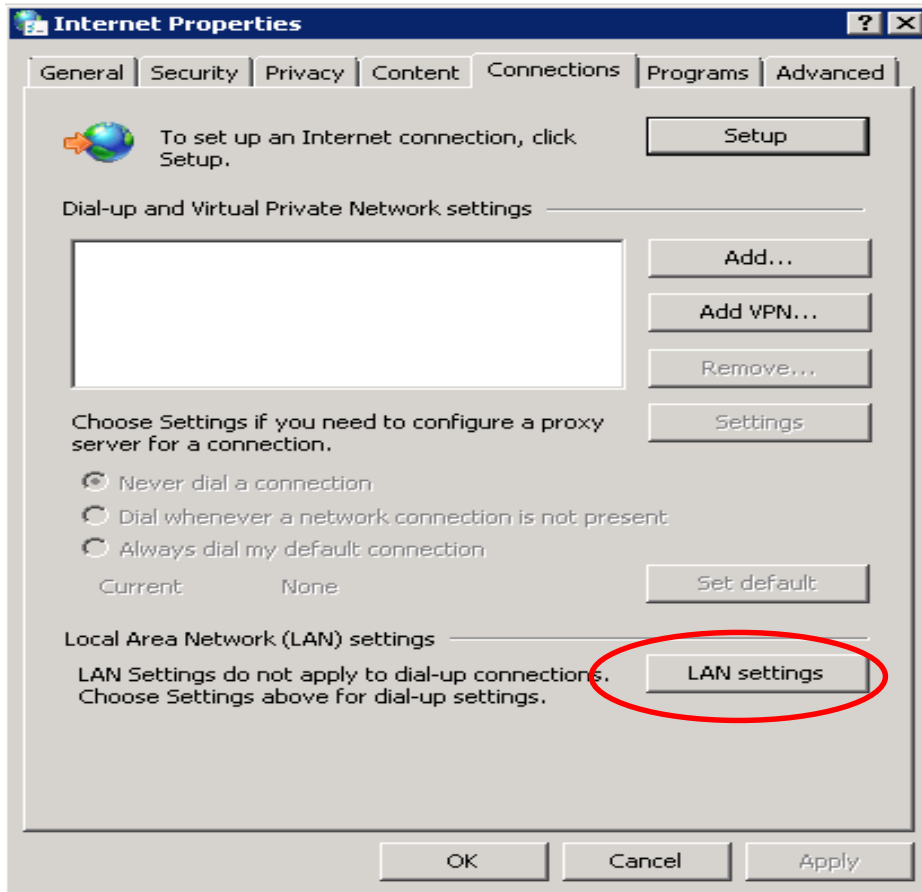
Scroll down to **Network** settings and click on the **change proxy settings**

## Network

Google Chrome is using your computer's system proxy settings to connect to the network.



Click on the **LAN settings** button in the popup window.



Tick the automatically detect proxy settings.

If you are an android user please select manual and type in address as proxy.school and port 3128.

