

## Connecting to the Newman Senior Technical College wireless network

1. Make sure that Wi-Fi is on.

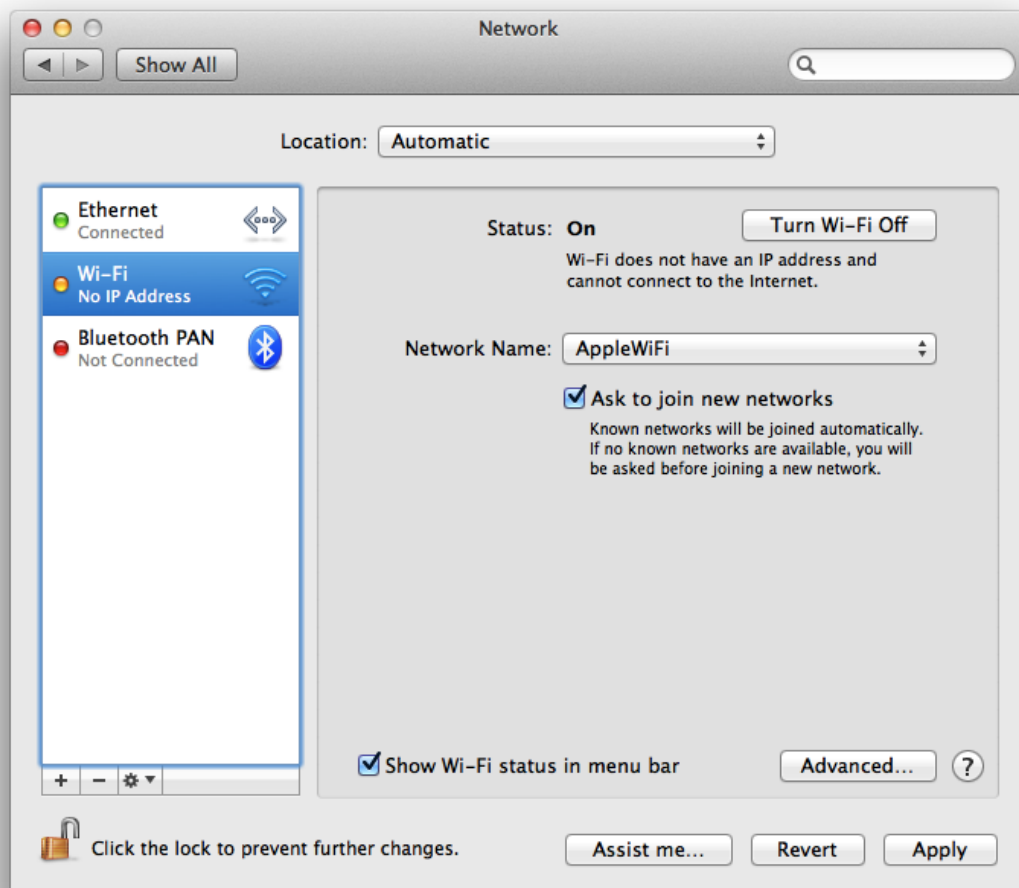
Mac OS X allows you to turn your Wi-Fi (AirPort) card off entirely in case you do not wish to use it. Sometimes, the Wi-Fi card may be turned off accidentally. If your Wi-Fi interface is on and connected to a Wi-Fi network, the Wi-Fi menu will be bold. The Wi-Fi menu is in the top right corner of the screen.



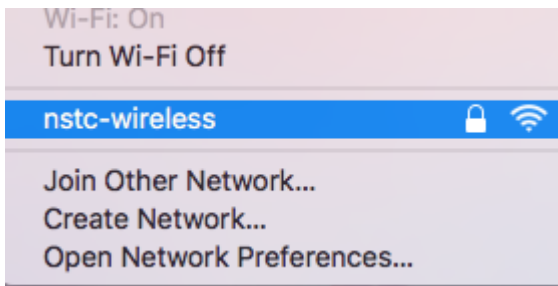
If your menu looks like the one above, then your computer is connected to a Wi-Fi network. Move to step 2 below.

If Wi-Fi is off, choose **Turn Wi-Fi On** from the menu.

**Note:** If the icon does not appear in the menu bar at all, then choose **System Preferences** from the **Apple** menu. Click the Network icon, then select Wi-Fi. Check the box next to "Show Wi-Fi status in menu bar."



2. Click on the wireless icon you should see a drop down menu select **nstc wireless**

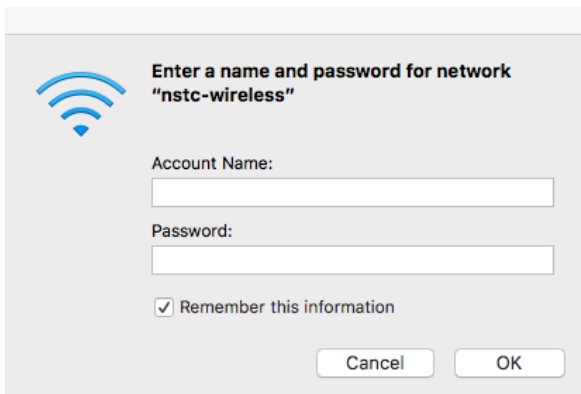


If your Wi-Fi network is secured using your Newman userid and password.

For example

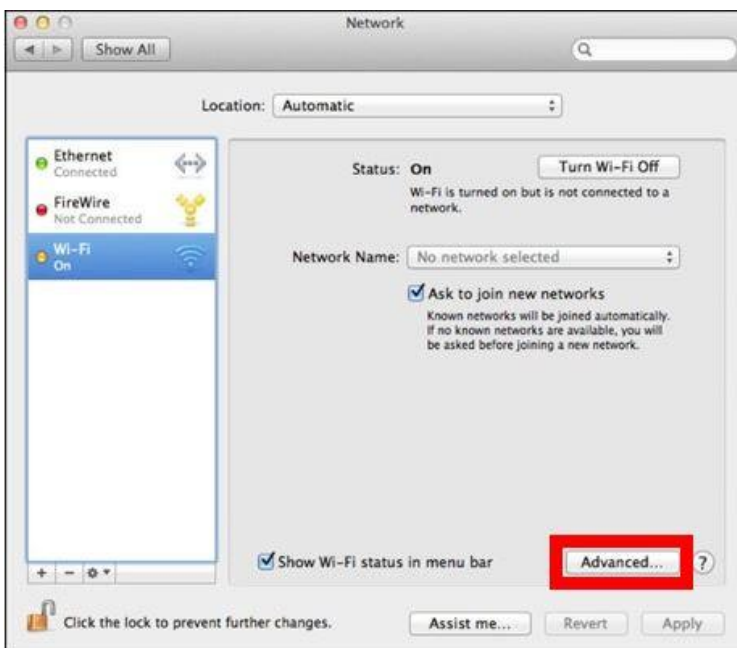
Userid = student.54

password = 12345

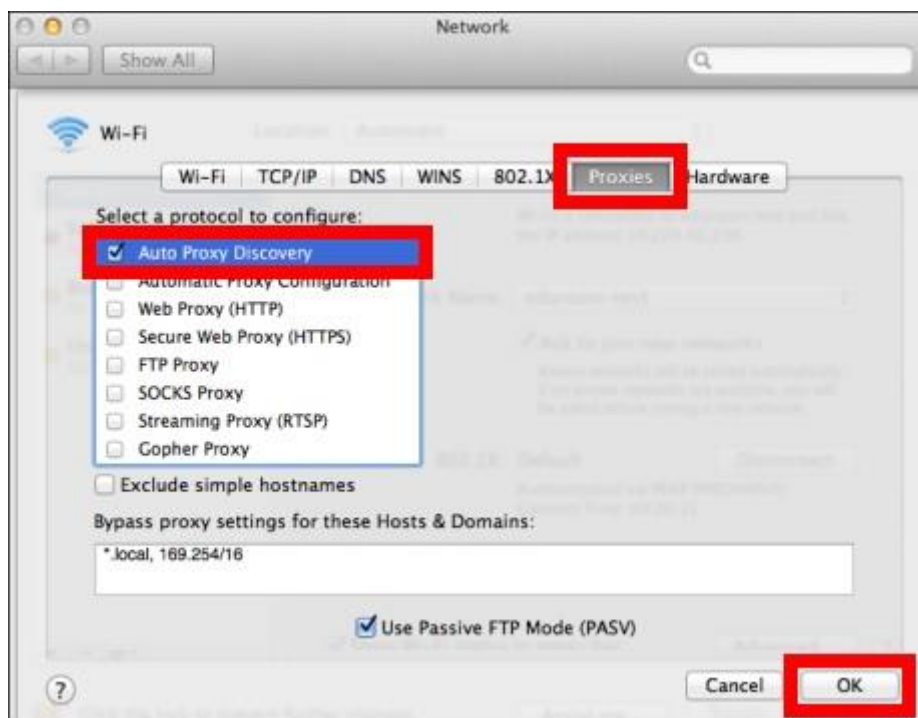


Newman Senior Technical College uses a proxy server; you will need to specify a proxy.

Open network preferences and click the advanced button.



Click on proxies and tick auto proxy discovery, click ok and apply.



1. Select **Auto Proxy Discovery** to automatically discover proxy servers and click OK.